

RUCO®

The Choice of Professionals

Ruco® Design Texture is a non-asbestos, unaggregated, dry-powder product, formulated for use in spray machines or hand application. Design Texture can be used to create various texture effects such as: fog, splatter, orange peel, knock down, skip trowel, or stipple.



RUCO® Design Texture

ADVANTAGES

Design Texture is an unaggregated and economical powder product that may be used for heavy splatter/knockdown texture or light orange peel. Conceals minor defects in substrate. Easy clean up. No spoilage if left in hopper overnight. Various textured effects can also be obtained with hand tools, such as hawk and trowel or rollers made for textures.

LOW SHRINKAGE AND CRACK RESISTANT:

Ruco Design Texture is ideal for thin to heavy textures because of its low shrinkage, excellent adhesion, and crack resistance.

CONSISTENT PRODUCT TIME AFTER TIME:

Satisfied customers continually report that Ruco Spray Textures are highly consistent from batch to batch. This is achieved through precise internal procedures and quality control.

CAUTION: Design Texture is not a washable surface when left untreated. The durability of Design Texture is dependent on the final decorative treatment used.

PRECAUTIONS: If dry-sanding or otherwise working in a dusty environment containing this material, ventilate or use a dust collector. It is also recommended that eye protection and a respirator, which is NIOSH approved, be worn when mixing or spraying. Wet sanding or sponging finished joints is recommended to avoid creating dust. Usage is not recommended for exterior applications or where intermittent exposure to moisture is expected.

WARRANTY: Job conditions and methods of application such as: temperature, humidity, and over-thinning are beyond the control of SWP Inc. Its warranties of fitness and merchantability as well as any other warranties expressed or implied shall be effective if this product is applied according to SWP Inc. directions and specifications. Maximum liability shall be limited to replacement of material only.

Customer Service
1-800-554-9255

RUCO®

Southern Wall Products Incorporated

1825 Fellowship Rd
Tucker, GA 30084
770-621-3065
www.ruco.com

RUCO® Design Texture

PRODUCT DATA

MATERIAL: Non-asbestos, unaggregated, dry-powder formulation

TYPE: Spray machine or hand application

PRODUCT SENSITIVITY: Do not apply in temperature below 50° or above 100° F

Substrate must be thoroughly dry.

COVERAGE: Approximately 700 ft² / 50lb bag (coverage may vary depending on job conditions, methods of application, and desired finish).

STORAGE: Store in enclosed dry storage area, both in the supplier's warehouse and on the jobsite.

PACKAGING

50 lb plastic-lined bags

ARCHITECTURAL SPECIFICATIONS

PART 1: GENERAL

1.01 Scope -

Specify to meet project requirements.

1.02 Qualifications -

Southern Wall Products, Inc. and approved manufacturers shall manufacture all Gypsum Wallboard finishing materials. The materials shall be installed in accordance with the Association of Wall and Ceiling Industries, "Recommended Levels of Gypsum Board Finish."

1.03 Delivery and Storage -

Store in an enclosed shelter in the original unopened packages. Protect from temperatures below freezing and over 120°F.

1.04 Project Conditions -

- A. Install interior gypsum wallboard finishing materials only after building is enclosed.
- B. Ventilation:
 - C. Provide ventilation during and following joint treatment application.
 - D. Use temporary air circulators in enclosed areas lacking natural ventilation.
 - E. Allow additional drying time between coats of joint treatment, under slow drying conditions.
 1. Protect installed materials from drafts during hot, dry weather.
- F. Temperature:
 - Maintain a minimum surface, mix, and air temperature of 50°F - 100°F until all joints have dried completely.

PART II: PRODUCTS

2.01 Materials -

- A. Joint Reinforcement - Ruco ® Reinforcing Tapes
- B. Joint Treatment
 1. Ruco ® Ready Mixed Joint Compounds
 2. Ruco ® Set Type Joint Compounds
- C. Ceiling and Wall Texture- Ruco® Design Texture
- D. Surface Equalizers
 1. RuCoat Equalizer®
 2. RuCoat Equalizer Plus®
 3. RuCoat Equalizer Plus® Powder

PART III: EXECUTION

3.01 Installation -

Use all products in accordance with Southern Wall Products' printed package instructions.

3.02 Application - Joint Compound

Levels of finish are to be determined in accordance with "Recommended Levels of Gypsum Board Finish" as developed by AWCI, Cisca, GA, and PDCA. ASTM recognizes the "Recommended Levels of Gypsum Board Finish" in ASTM C840.

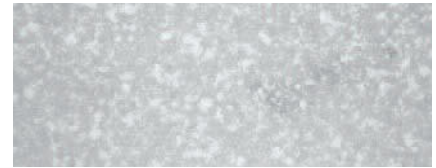
- A. Level 1
Intended for plenum areas above ceilings, areas where assembly is concealed by final construction, smoke barriers, and separation walls in attic.
- B. Level 2
Intended for water resistant gypsum board for tile substrate, garages, warehouses, and other areas where appearance is not of primary concern.
- C. Level 3
Intended for appearance areas receiving heavy or medium texture finishes or where heavy grade wall coverings are to be applied as final finish.
- D. Level 4
Intended for appearance areas receiving flat paints, light texture finishes, or light or medium weight wall covering.
- E. Level 5
Intended for appearance areas receiving flat, low-luster, semi-gloss, gloss, or enamel finish paints or coatings, light texture finishes, light or medium weight wall covering, un-backed vinyl wall coverings, or severe light conditions.

3.03

See finish schedule for areas to receive texture. Submit five texture samples for selection by architect.



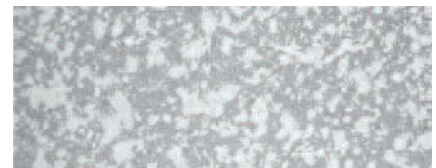
KNOCKDOWN TEXTURE



ORANGE PEEL TEXTURE



STIPPLE



SPLATTER



SUBMITTAL APPROVAL

Job Name: _____

Job Location: _____

Contractor: _____

Approved By: _____

Title: _____

Date: _____

Stamps and Signatures: