

# RUCO<sup>®</sup>

## *The Choice of Professionals*

*Ruco<sup>®</sup> Styrene Ceiling Texture is a non-asbestos, aggregated formulation for spray application over concrete, gypsum wallboard or plaster ceilings. They produce a sharp decorative appearance, available in fine round, fine, medium, and coarse aggregate sizes.*



## RUCO<sup>®</sup> Polystyrene Medium

### **ADVANTAGES**

**EASY MIXING:** Mixes lump free in a short period of time. Minimum fall out.

**TROUBLE FREE APPLICATION:** Sprays easily using either pole gun or hopper gun with very little over-spray. Superior flow characteristics allow for more evenly distributed aggregate, providing exceptional wet and dry hiding properties as well as outstanding ability to patch. Easy clean up. No spoilage if left in hopper overnight.

**CONSISTENT PRODUCT TIME AFTER TIME:** Satisfied customers continually report that Ruco<sup>®</sup> Ceiling Textures are highly consistent from batch to batch. This is achieved through precise internal procedures and quality control.

**PRECAUTIONS:** If dry-sanding or otherwise working in a dusty environment containing this material, ventilate or use a dust collector. It is also recommended that eye protection and a respirator, which is NIOSH approved, be worn when mixing or spraying. Wet sanding or sponging finished joints is recommended to avoid creating dust.

**WARRANTY:** Job conditions and methods of application such as: temperature, humidity, and over-thinning are beyond the control of SWP Inc. Its warranties of fitness and merchantability as well as any other warranties expressed or implied shall be effective if this product is applied according to SWP Inc. directions and specifications. Maximum liability shall be limited to replacement of material only.

***For Superior Service Call  
1-800-554-9255***

**RUCO<sup>®</sup>**

***Southern Wall Products Incorporated***

*P.O. Box 1109*

*Tucker, Georgia 30085-1109*

*770-938-0121*

***www.ruco.com***

# RUCO® Polystyrene Medium

## PRODUCT DATA

MATERIAL: Non-asbestos, dry-powder formulation

TYPE: Spray machine or hopper gun application

PRODUCT SENSITIVITY: Do not spray in temperature below 50°F or above 100°F. Substrate must be thoroughly dry.

COVERAGE: Approximately 300 to 350 ft<sup>2</sup> / 40 lb bag (depending on job conditions and methods of application).

STORAGE: Store in enclosed dry storage area, both in the supplier's warehouse and on the job site.

## PACKAGING

40 lb plastic-lined bags

## ARCHITECTURAL SPECIFICATIONS

### PART 1: GENERAL

#### 1.01 Scope -

Specify to meet project requirements.

#### 1.02 Qualifications -

Southern Wall Products, Inc. and approved manufacturers shall manufacture all Gypsum Wallboard finishing materials. The materials shall be installed in accordance with the Association of Wall and Ceiling Industries, "Recommended Levels of Gypsum Board Finish."

#### 1.03 Delivery and Storage -

Store in an enclosed shelter in the original unopened packages. Protect from temperatures below freezing and over 120°F.

#### 1.04 Project Conditions -

A. Install interior gypsum wallboard finishing materials only after building is enclosed.

B. Ventilation:

1. Provide ventilation during and following joint treatment application.
2. Use temporary air circulators in enclosed areas lacking natural ventilation.
3. Allow additional drying time between coats of joint treatment, under slow drying conditions.
4. Protect installed materials from drafts during hot, dry weather.

C. Temperature:

Maintain a minimum surface, mix, and air temperature of 50°F - until all joints have dried completely.

### PART II: PRODUCTS

#### 2.01 Materials -

A. Joint Reinforcement - Ruco® Reinforcing Tapes

B. Joint Treatment

1. Ruco® Ready Mixed Joint Compounds
2. Ruco® Set Type Joint Compounds

C. Ceiling and Wall Textures

1. Ruco® Styrene Spray Textures
2. Ruco® Design Texture

D. Surface Equalizers

1. RuCoat® Equalizer
2. RuCoat® Equalizer Plus

### PART III: EXECUTION

#### 3.01 Installation -

Use all products in accordance with Southern Wall Products' printed package instructions.

#### 3.02 Application - Joint Compound

Levels of finish are to be determined in accordance with "Recommended Levels of Gypsum Board Finish" as developed by AWCI, CISCA, GA, and PDCA. ASTM recognizes the "Recommended Levels of Gypsum Board Finish" in ASTM C840.

A. Level 1

Intended for plenum areas above ceilings, areas where assembly is concealed by final construction, smoke barriers, and separation walls in attic.

B. Level 2

Intended for water resistant gypsum board for tile substrate, garages, warehouses, and other areas where appearance is not of primary concern.

C. Level 3

Intended for appearance areas receiving heavy or medium texture finishes or where heavy grade wallcoverings are to be applied as final finish.

D. Level 4

Intended for appearance areas receiving flat paints, light texture finishes, or light or medium weight wallcovering.

E. Level 5

Intended for appearance areas receiving flat, low-luster, semi-gloss, gloss, or enamel finish paints or coatings, light texture finishes, light or medium weight wallcovering, un-backed vinyl wallcoverings, or severe light conditions.

#### 3.03 Application - Ceiling Texture

A. Level 1: Does not apply

B. Level 2: Does not apply

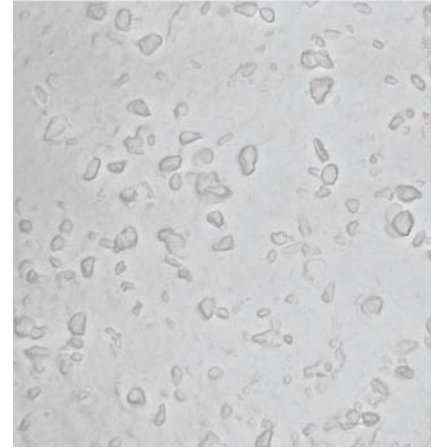
C. Level 3: Heavy or medium ceiling texture to be applied to all ceilings in Level 3

D. Level 4: Light texture to be applied to all ceilings in Level 4 area

E. Level 5: Does not apply. Level 5 is for non-textured finishes.

#### 3.04 Application - Concrete Ceilings

Ruco® Ceiling Texture to be applied to all interior poured concrete ceilings after concrete is dry. Remove oils, grease, efflorescence, or other deposits. Grind down holes and uneven areas. Fill with Ruco® Sure Sand Set Type Joint Compound and seal surface with top quality sealer before spraying ceiling texture.



POLYSTYRENE MEDIUM

## SUBMITTAL APPROVAL

Job Name: \_\_\_\_\_

Job Location: \_\_\_\_\_

Contractor: \_\_\_\_\_

Approved By: \_\_\_\_\_

Title: \_\_\_\_\_

Date: \_\_\_\_\_

Stamps and Signatures:

--